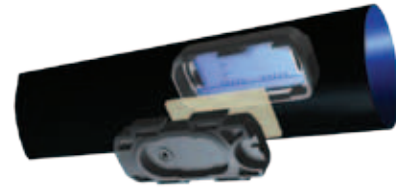




## DRIPNET PC™ AS

COMPACT INTEGRAL PRESSURE-COMPENSATING,  
CONTINUOUSLY SELF-CLEANING, ANTI-SIPHON  
MECHANISM DRIPPER



16009 - 16010 - 16012 - 20010 - 20012 - 23009

---

### TECHNICAL INFORMATION

- Pressure-compensating range: 0.25/0.40-2.5/3.0 bar (according to flow rate mode).
- Anti-Siphon mechanism.
- Recommended filtration: according to drippers flow rate.  
Filtration method is to be selected based on the kind and concentration of the dirt particles existing in the water. Wherever sand exceeding 2 ppm exists in the water, a Hydrocyclon filter is to be installed before the main filter. When sand/ silt/ clay solids exceed 100ppm, pre treatment will be applied according to Netafim™ expert team's instructions.
- TurboNet™ labyrinth with large water passage.
- To be "welded" into thick-walled dripperlines (0.9, 1.0 and 1.2 mm).
- Injected dripper, very low CV.
- Injected silicon diaphragm.
- UV resistant . Resistant to standard nutrients used in agricultural.
- DripNet PC™ drippers meet ISO 9261 Standards with production certified by the Israel Standards Institute (SII).

## DRIPPERS TECHNICAL DATA

| FLOW RATE<br>(L/H.) | WORKING<br>PRESSURE RANGE<br>(BAR) | WATER PASSAGES DIMENSIONS<br>WIDTH-DEPTH-LENGTH<br>(MM.) | FILTRATION<br>AREA<br>(MM <sup>2</sup> ) | CONSTANT<br>K | EXPONENT * | RECOMMENDED<br>FILTRATION<br>(MICRON)/(MESH) |
|---------------------|------------------------------------|--|--|---------------|------------|--|
| 0.6                 | 0.25 - 2.5                         | 0.52 x 0.60 x 22   | 42                                       | 0.6           | 0          | 130/120                                      |
| 1.0                 | 0.40 - 2.5                         | 0.61 x 0.60 x 8  | 42                                       | 1.0           | 0          | 130/120                                      |
| 1.6                 | 0.40 - 2.5                         | 0.76 x 0.73 x 8  | 42                                       | 1.6           | 0          | 200/80                                       |
| 2.0                 | 0.40 - 3.0                         | 0.76 x 0.85 x 8  | 42                                       | 2.0           | 0          | 200/80                                       |
| 3.0                 | 0.40 - 3.0                         | 1.02 x 0.88 x 8  | 42                                       | 3.0           | 0          | 200/80                                       |
| 3.8                 | 0.60 - 3.0                         | 1.02 x 0.88 x 8  | 42                                       | 3.8           | 0          | 200/80                                       |

\* Within working pressure range

## DRIPPERLINES TECHNICAL DATA

| MODEL | INSIDE DIAMETER<br>(MM.) | WALL THICKNESS<br>(MM.) | OUTSIDE DIAMETER<br>(MM.) | MAX. WORKING PRESSURE<br>(BAR) | MAXIMUM FLUSHING PRESSURE<br>(BAR) | KD   |
|-------|--------------------------|-------------------------|---------------------------|--------------------------------|------------------------------------|------|
| 16009 | 14.2                     | 0.9                     | 16.0                      | 2.5/3.0                        | 3.9                                | 0.72 |
| 16010 | 14.2                     | 1.0                     | 16.2                      | 2.5/3.0                        | 3.9                                | 0.72 |
| 16012 | 14.2                     | 1.2                     | 16.6                      | 2.5/3.0                        | 3.9                                | 0.72 |
| 20010 | 17.5                     | 1.0                     | 19.5                      | 2.5/3.0                        | 3.9                                | 0.25 |
| 20012 | 17.5                     | 1.2                     | 19.9                      | 2.5/3.0                        | 3.9                                | 0.25 |
| 23009 | 20.8                     | 0.9                     | 22.6                      | 2.5/3.0                        | 3.9                                | 0.20 |

\* Maximum working pressure is defined by the dripper and not by the dripperline wall thickness

## DRIPPERLINES PACKAGE DATA (ON BUNDLED COILS)

| MODEL  | WALL THICKNESS<br>(MM.) | COIL LENGTH<br>(M.) | DISTANCE BETWEEN<br>DRIPPERS<br>(M.) | AVERAGE* COIL<br>WEIGHT<br>(KG.) | COILS IN A 40 FEET<br>CONTAINER<br>(UNITS) | TOTAL IN A 40 FEET<br>CONTAINER<br>(M.) |
|--------|-------------------------|---------------------|--------------------------------------|----------------------------------|--|---|
| 16009  | 0.9                     | 500                 | 0.2 to 1.0                           | 18.5                             | 330  | 165000                                  |
| 16010  | 1.0                     | 500                 | 0.2 to 1.0                           | 20.4                             | 330  | 165000                                  |
| 16012  | 1.2                     | 400                 | 0.2 to 1.0                           | 19.2                             | 352  | 140800                                  |
| 20010  | 1.0                     | 300                 | 0.2 to 1.0                           | 16.3                             | 330  | 99000                                   |
| 20012  | 1.2                     | 300                 | 0.2 to 1.0                           | 19.5                             | 330  | 99000                                   |
| 23009* | 0.9                     | 350                 | 0.15 to 0.20                         | 22.5                             | 480  | 168000                                  |
|        |                         | 400                 | 0.25 to 1.00                         | 25.0                             |  | 192000                                  |

\* According to drippers spacing

\*\* Package only on carton/plastic coils

## MAX. LATERAL LENGTH (METER) AT DIFFERENT INLET PRESSURE AND DIFFERENT SLOPES

DRIPNET PC™ AS 16009/16010/16012 • ID 14.2 MM • KD 0.72 • FLOW RATE 0.6 L/H

|                 |                      | DISTANCE BETWEEN DRIPPERS (METER) |     |     |     |     |     |     |     |     |
|-----------------|----------------------|-----------------------------------|-----|-----|-----|-----|-----|-----|-----|-----|
| UPHILL<br>2%    | INLET PRESSURE (BAR) | 0.2                               | 0.3 | 0.4 | 0.5 | 0.6 | 0.7 | 0.8 | 0.9 | 1.0 |
|                 | 1.0                  | 110                               | 145 | 171 | 192 | 208 | 221 | 232 | 240 | 248 |
|                 | 1.5                  | 143                               | 193 | 234 | 268 | 297 | 322 | 343 | 362 | 378 |
|                 | 2.0                  | 167                               | 227 | 278 | 323 | 361 | 394 | 424 | 450 | 474 |
|                 | 2.5                  | 186                               | 255 | 314 | 366 | 411 | 452 | 488 | 521 | 551 |
| FLAT<br>TERRAIN | 1.0                  | 129                               | 182 | 230 | 274 | 315 | 354 | 391 | 427 | 460 |
|                 | 1.5                  | 159                               | 224 | 284 | 339 | 390 | 438 | 485 | 528 | 571 |
|                 | 2.0                  | 181                               | 255 | 323 | 386 | 445 | 501 | 553 | 603 | 652 |
|                 | 2.5                  | 198                               | 281 | 355 | 425 | 490 | 551 | 609 | 664 | 718 |
| DOWNHILL<br>2%  | 1.0                  | 148                               | 220 | 291 | 361 | 431 | 501 | 570 | 638 | 703 |
|                 | 1.5                  | 175                               | 256 | 335 | 412 | 487 | 561 | 635 | 708 | 777 |
|                 | 2.0                  | 195                               | 284 | 369 | 452 | 532 | 611 | 689 | 765 | 838 |
|                 | 2.5                  | 211                               | 306 | 397 | 485 | 570 | 652 | 734 | 814 | 890 |

Minimum considered pressure 0.4 bar

Due to lateral filling time and flushing effectiveness it is not recommended to exceed 800 meters lateral length

## MAX. LATERAL LENGTH (METER) AT DIFFERENT INLET PRESSURE AND DIFFERENT SLOPES

DRIPNET PC™ AS 16009/16010/16012 • ID 14.2 MM • KD 0.72 • FLOW RATE 1.0 L/H

|                 |                      | DISTANCE BETWEEN DRIPPERS (METER) |     |     |     |     |     |     |     |     |
|-----------------|----------------------|-----------------------------------|-----|-----|-----|-----|-----|-----|-----|-----|
| UPHILL<br>2%    | INLET PRESSURE (BAR) | 0.2                               | 0.3 | 0.4 | 0.5 | 0.6 | 0.7 | 0.8 | 0.9 | 1.0 |
|                 | 1.0                  | 83                                | 111 | 134 | 153 | 169 | 183 | 194 | 205 | 214 |
|                 | 1.5                  | 106                               | 145 | 178 | 207 | 232 | 253 | 274 | 292 | 308 |
|                 | 2.0                  | 122                               | 169 | 209 | 244 | 275 | 304 | 330 | 354 | 375 |
|                 | 2.5                  | 135                               | 188 | 234 | 274 | 311 | 344 | 374 | 403 | 429 |
| FLAT<br>TERRAIN | 1.0                  | 92                                | 130 | 165 | 197 | 226 | 255 | 282 | 307 | 331 |
|                 | 1.5                  | 114                               | 161 | 204 | 243 | 280 | 315 | 349 | 381 | 411 |
|                 | 2.0                  | 129                               | 183 | 232 | 277 | 320 | 360 | 398 | 434 | 469 |
|                 | 2.5                  | 142                               | 201 | 255 | 305 | 352 | 396 | 438 | 478 | 517 |
| DOWNHILL<br>2%  | 1.0                  | 102                               | 150 | 196 | 242 | 287 | 330 | 374 | 418 | 461 |
|                 | 1.5                  | 122                               | 177 | 230 | 281 | 331 | 379 | 426 | 473 | 520 |
|                 | 2.0                  | 136                               | 197 | 255 | 311 | 364 | 417 | 468 | 518 | 567 |
|                 | 2.5                  | 148                               | 214 | 276 | 336 | 393 | 449 | 502 | 555 | 607 |

Minimum considered pressure 0.4 bar

## MAX. LATERAL LENGTH (METER) AT DIFFERENT INLET PRESSURE AND DIFFERENT SLOPES

DRIPNET PC™ AS 16009/16010/16012 • ID 14.2 MM • KD 0.72 • FLOW RATE 1.6 L/H

|                 |                      | DISTANCE BETWEEN DRIPPERS (METER) |     |     |     |     |     |     |     |     |
|-----------------|----------------------|-----------------------------------|-----|-----|-----|-----|-----|-----|-----|-----|
| UPHILL<br>2%    | INLET PRESSURE (BAR) | 0.2                               | 0.3 | 0.4 | 0.5 | 0.6 | 0.7 | 0.8 | 0.9 | 1.0 |
|                 | 1.0                  | 63                                | 86  | 105 | 121 | 136 | 148 | 159 | 169 | 178 |
|                 | 1.5                  | 79                                | 110 | 136 | 159 | 180 | 199 | 216 | 231 | 246 |
|                 | 2.0                  | 91                                | 127 | 158 | 187 | 212 | 235 | 256 | 276 | 295 |
|                 | 2.5                  | 101                               | 141 | 176 | 208 | 237 | 264 | 289 | 311 | 333 |
| FLAT<br>TERRAIN | 1.0                  | 68                                | 96  | 122 | 145 | 167 | 188 | 208 | 227 | 245 |
|                 | 1.5                  | 84                                | 118 | 150 | 180 | 207 | 232 | 258 | 281 | 304 |
|                 | 2.0                  | 95                                | 135 | 171 | 205 | 236 | 265 | 294 | 320 | 347 |
|                 | 2.5                  | 104                               | 148 | 188 | 225 | 259 | 292 | 323 | 353 | 382 |
| DOWNHILL<br>2%  | 1.0                  | 73                                | 107 | 138 | 170 | 200 | 230 | 258 | 287 | 316 |
|                 | 1.5                  | 88                                | 127 | 164 | 200 | 234 | 267 | 300 | 332 | 363 |
|                 | 2.0                  | 99                                | 143 | 184 | 223 | 260 | 297 | 332 | 366 | 400 |
|                 | 2.5                  | 108                               | 155 | 199 | 242 | 282 | 321 | 358 | 395 | 431 |

Minimum considered pressure 0.4 bar

## MAX. LATERAL LENGTH (METER) AT DIFFERENT INLET PRESSURE AND DIFFERENT SLOPES

DRIPNET PC™ AS 16009/16010/16012 • ID 14.2 MM • KD 0.72 • FLOW RATE 2.0 L/H

|                 |                      | DISTANCE BETWEEN DRIPPERS (METER) |     |     |     |     |     |     |     |     |
|-----------------|----------------------|-----------------------------------|-----|-----|-----|-----|-----|-----|-----|-----|
| UPHILL<br>2%    | INLET PRESSURE (BAR) | 0.2                               | 0.3 | 0.4 | 0.5 | 0.6 | 0.7 | 0.8 | 0.9 | 1.0 |
|                 | 1.0                  | 55                                | 75  | 92  | 108 | 121 | 133 | 143 | 153 | 162 |
|                 | 1.5                  | 69                                | 96  | 119 | 140 | 159 | 176 | 192 | 206 | 220 |
|                 | 2.0                  | 79                                | 110 | 138 | 164 | 186 | 207 | 226 | 244 | 261 |
|                 | 2.5                  | 87                                | 122 | 154 | 182 | 208 | 232 | 254 | 275 | 294 |
|                 | 3.0                  | 94                                | 133 | 167 | 198 | 226 | 253 | 278 | 301 | 322 |
| FLAT<br>TERRAIN | 1.0                  | 59                                | 83  | 105 | 126 | 145 | 163 | 180 | 196 | 212 |
|                 | 1.5                  | 72                                | 102 | 130 | 155 | 179 | 202 | 223 | 243 | 263 |
|                 | 2.0                  | 82                                | 116 | 148 | 177 | 204 | 230 | 254 | 278 | 300 |
|                 | 2.5                  | 90                                | 128 | 162 | 195 | 224 | 253 | 280 | 306 | 331 |
|                 | 3.0                  | 97                                | 138 | 175 | 210 | 242 | 272 | 302 | 329 | 356 |
| DOWNHILL<br>2%  | 1.0                  | 63                                | 91  | 118 | 144 | 169 | 194 | 218 | 242 | 266 |
|                 | 1.5                  | 75                                | 109 | 140 | 171 | 199 | 228 | 255 | 282 | 308 |
|                 | 2.0                  | 85                                | 122 | 157 | 191 | 223 | 253 | 283 | 312 | 340 |
|                 | 2.5                  | 93                                | 133 | 171 | 207 | 241 | 274 | 306 | 338 | 368 |
|                 | 3.0                  | 99                                | 143 | 183 | 221 | 257 | 293 | 326 | 359 | 391 |

Minimum considered pressure 0.4 bar

## MAX. LATERAL LENGTH (METER) AT DIFFERENT INLET PRESSURE AND DIFFERENT SLOPES

DRIPNET PC™ AS 16009/16010/16012 • ID 14.2 MM • KD 0.72 • FLOW RATE 3.0 L/H

|                 |                      | DISTANCE BETWEEN DRIPPERS (METER) |     |     |     |     |     |     |     |     |
|-----------------|----------------------|-----------------------------------|-----|-----|-----|-----|-----|-----|-----|-----|
| UPHILL<br>2%    | INLET PRESSURE (BAR) | 0.2                               | 0.3 | 0.4 | 0.5 | 0.6 | 0.7 | 0.8 | 0.9 | 1.0 |
|                 |                      | 1.0                               | 43  | 59  | 73  | 86  | 97  | 107 | 117 | 125 |
|                 | 1.5                  | 53                                | 75  | 94  | 111 | 126 | 140 | 153 | 166 | 177 |
|                 | 2.0                  | 61                                | 86  | 108 | 128 | 146 | 163 | 179 | 194 | 208 |
|                 | 2.5                  | 67                                | 95  | 120 | 142 | 163 | 182 | 200 | 217 | 233 |
|                 | 3.0                  | 73                                | 103 | 130 | 154 | 177 | 198 | 218 | 237 | 254 |
| FLAT<br>TERRAIN | 1.0                  | 45                                | 64  | 81  | 97  | 112 | 125 | 138 | 151 | 164 |
|                 | 1.5                  | 55                                | 79  | 100 | 120 | 138 | 155 | 172 | 187 | 203 |
|                 | 2.0                  | 63                                | 89  | 114 | 136 | 157 | 177 | 196 | 214 | 231 |
|                 | 2.5                  | 69                                | 98  | 125 | 150 | 173 | 195 | 215 | 236 | 255 |
|                 | 3.0                  | 74                                | 106 | 134 | 161 | 186 | 210 | 232 | 254 | 275 |
| DOWNHILL<br>2%  | 1.0                  | 47                                | 68  | 88  | 108 | 126 | 144 | 162 | 178 | 195 |
|                 | 1.5                  | 57                                | 83  | 106 | 129 | 150 | 171 | 190 | 210 | 229 |
|                 | 2.0                  | 65                                | 93  | 119 | 144 | 168 | 190 | 213 | 234 | 255 |
|                 | 2.5                  | 71                                | 101 | 130 | 157 | 182 | 207 | 231 | 254 | 277 |
|                 | 3.0                  | 76                                | 109 | 139 | 168 | 196 | 222 | 247 | 271 | 295 |

Minimum considered pressure 0.4 bar

## MAX. LATERAL LENGTH (METER) AT DIFFERENT INLET PRESSURE AND DIFFERENT SLOPES

DRIPNET PC™ AS 16009/16010/16012 • ID 14.2 MM • KD 0.72 • FLOW RATE 3.8 L/H

|                 |                      | DISTANCE BETWEEN DRIPPERS (METER) |     |     |     |     |     |     |     |     |
|-----------------|----------------------|-----------------------------------|-----|-----|-----|-----|-----|-----|-----|-----|
| UPHILL<br>2%    | INLET PRESSURE (BAR) | 0.2                               | 0.3 | 0.4 | 0.5 | 0.6 | 0.7 | 0.8 | 0.9 | 1.0 |
|                 |                      | 1.0                               | 37  | 51  | 64  | 75  | 85  | 95  | 103 | 111 |
|                 | 1.5                  | 46                                | 65  | 81  | 96  | 109 | 122 | 134 | 145 | 155 |
|                 | 2.0                  | 53                                | 74  | 93  | 111 | 127 | 142 | 156 | 169 | 182 |
|                 | 2.5                  | 58                                | 82  | 103 | 123 | 141 | 158 | 174 | 189 | 203 |
|                 | 3.0                  | 63                                | 88  | 112 | 133 | 153 | 172 | 189 | 205 | 221 |
| FLAT<br>TERRAIN | 1.0                  | 39                                | 55  | 69  | 83  | 95  | 108 | 119 | 131 | 141 |
|                 | 1.5                  | 47                                | 67  | 86  | 103 | 118 | 133 | 147 | 161 | 174 |
|                 | 2.0                  | 54                                | 77  | 97  | 117 | 135 | 152 | 168 | 184 | 199 |
|                 | 2.5                  | 59                                | 84  | 107 | 128 | 148 | 167 | 185 | 203 | 219 |
|                 | 3.0                  | 64                                | 91  | 115 | 138 | 160 | 180 | 199 | 218 | 236 |
| DOWNHILL<br>2%  | 1.0                  | 40                                | 58  | 75  | 91  | 106 | 121 | 136 | 150 | 164 |
|                 | 1.5                  | 49                                | 70  | 90  | 109 | 127 | 144 | 162 | 177 | 194 |
|                 | 2.0                  | 55                                | 79  | 102 | 123 | 143 | 162 | 181 | 199 | 216 |
|                 | 2.5                  | 60                                | 86  | 111 | 134 | 155 | 176 | 197 | 216 | 235 |
|                 | 3.0                  | 65                                | 93  | 119 | 143 | 166 | 189 | 210 | 231 | 251 |

Minimum considered pressure 0.4 bar

## MAX. LATERAL LENGTH (METER) AT DIFFERENT INLET PRESSURE AND DIFFERENT SLOPES

DRIPNET PC™ AS 20010/20012 • ID 17.5 MM • KD 0.25 • FLOW RATE 0.6 L/H

|                 |                      | DISTANCE BETWEEN DRIPPERS (METER) |     |     |     |     |      |      |      |      |
|-----------------|----------------------|-----------------------------------|-----|-----|-----|-----|------|------|------|------|
| UPHILL<br>2%    | INLET PRESSURE (BAR) | 0.2                               | 0.3 | 0.4 | 0.5 | 0.6 | 0.7  | 0.8  | 0.9  | 1.0  |
|                 | 1.0                  | 162                               | 199 | 223 | 240 | 252 | 261  | 268  | 273  | 277  |
|                 | 1.5                  | 220                               | 281 | 326 | 361 | 389 | 411  | 429  | 444  | 456  |
|                 | 2.0                  | 262                               | 340 | 401 | 450 | 490 | 524  | 553  | 578  | 599  |
|                 | 2.5                  | 294                               | 386 | 460 | 521 | 572 | 617  | 654  | 688  | 717  |
| FLAT<br>TERRAIN | 1.0                  | 213                               | 292 | 362 | 426 | 485 | 540  | 593  | 643  | 691  |
|                 | 1.5                  | 264                               | 362 | 449 | 528 | 602 | 671  | 736  | 798  | 859  |
|                 | 2.0                  | 300                               | 413 | 512 | 603 | 688 | 767  | 842  | 914  | 982  |
|                 | 2.5                  | 330                               | 454 | 564 | 665 | 757 | 845  | 928  | 1006 | 1082 |
| DOWNHILL<br>2%  | 1.0                  | 266                               | 392 | 516 | 638 | 749 | 854  | 956  | 1056 | 1154 |
|                 | 1.5                  | 308                               | 446 | 578 | 709 | 828 | 941  | 1050 | 1157 | 1262 |
|                 | 2.0                  | 340                               | 488 | 629 | 766 | 892 | 1012 | 1128 | 1241 | 1352 |
|                 | 2.5                  | 367                               | 523 | 672 | 815 | 947 | 1072 | 1194 | 1313 | 1429 |

Minimum considered pressure 0.4 bar

Due to lateral filling time and flushing effectiveness it is not recommended to exceed 800 meters lateral length

## MAX. LATERAL LENGTH (METER) AT DIFFERENT INLET PRESSURE AND DIFFERENT SLOPES

DRIPNET PC™ AS 20010/20012 • ID 17.5 MM • KD 0.25 • FLOW RATE 1.0 L/H

|                 |                      | DISTANCE BETWEEN DRIPPERS (METER) |     |     |     |     |     |     |     |     |
|-----------------|----------------------|-----------------------------------|-----|-----|-----|-----|-----|-----|-----|-----|
| UPHILL<br>2%    | INLET PRESSURE (BAR) | 0.2                               | 0.3 | 0.4 | 0.5 | 0.6 | 0.7 | 0.8 | 0.9 | 1.0 |
|                 | 1.0                  | 126                               | 161 | 185 | 205 | 219 | 231 | 241 | 248 | 255 |
|                 | 1.5                  | 167                               | 218 | 258 | 291 | 319 | 342 | 362 | 379 | 394 |
|                 | 2.0                  | 195                               | 258 | 310 | 353 | 390 | 423 | 451 | 476 | 499 |
|                 | 2.5                  | 218                               | 291 | 351 | 403 | 448 | 487 | 522 | 554 | 584 |
| FLAT<br>TERRAIN | 1.0                  | 153                               | 210 | 260 | 307 | 349 | 389 | 427 | 464 | 498 |
|                 | 1.5                  | 189                               | 260 | 323 | 380 | 433 | 483 | 530 | 576 | 619 |
|                 | 2.0                  | 215                               | 296 | 368 | 434 | 495 | 552 | 606 | 658 | 708 |
|                 | 2.5                  | 237                               | 326 | 406 | 478 | 545 | 608 | 668 | 725 | 780 |
| DOWNHILL<br>2%  | 1.0                  | 180                               | 262 | 340 | 418 | 494 | 568 | 643 | 713 | 777 |
|                 | 1.5                  | 212                               | 303 | 390 | 474 | 555 | 635 | 714 | 788 | 858 |
|                 | 2.0                  | 236                               | 335 | 429 | 518 | 605 | 689 | 772 | 850 | 924 |
|                 | 2.5                  | 256                               | 362 | 461 | 556 | 647 | 735 | 822 | 904 | 981 |

Minimum considered pressure 0.4 bar

Due to lateral filling time and flushing effectiveness it is not recommended to exceed 800 meters lateral length

## MAX. LATERAL LENGTH (METER) AT DIFFERENT INLET PRESSURE AND DIFFERENT SLOPES

DRIPNET PC™ AS 20010/20012 • ID 17.5 MM • KD 0.25 • FLOW RATE 1.6 L/H

|                 |                      | DISTANCE BETWEEN DRIPPERS (METER) |     |     |     |     |     |     |     |     |
|-----------------|----------------------|-----------------------------------|-----|-----|-----|-----|-----|-----|-----|-----|
| UPHILL<br>2%    | INLET PRESSURE (BAR) | 0.2                               | 0.3 | 0.4 | 0.5 | 0.6 | 0.7 | 0.8 | 0.9 | 1.0 |
|                 | 1.0                  | 98                                | 128 | 150 | 169 | 184 | 197 | 208 | 217 | 225 |
|                 | 1.5                  | 127                               | 169 | 203 | 232 | 256 | 278 | 298 | 315 | 330 |
|                 | 2.0                  | 148                               | 198 | 240 | 276 | 308 | 336 | 362 | 385 | 407 |
|                 | 2.5                  | 164                               | 221 | 270 | 312 | 349 | 383 | 414 | 442 | 468 |
| FLAT<br>TERRAIN | 1.0                  | 113                               | 155 | 192 | 227 | 258 | 288 | 316 | 343 | 369 |
|                 | 1.5                  | 139                               | 192 | 238 | 281 | 320 | 357 | 393 | 426 | 458 |
|                 | 2.0                  | 159                               | 219 | 272 | 321 | 366 | 408 | 449 | 487 | 524 |
|                 | 2.5                  | 174                               | 241 | 299 | 353 | 403 | 450 | 494 | 536 | 577 |
| DOWNHILL<br>2%  | 1.0                  | 128                               | 183 | 236 | 288 | 337 | 386 | 435 | 483 | 531 |
|                 | 1.5                  | 152                               | 215 | 275 | 332 | 387 | 440 | 493 | 545 | 595 |
|                 | 2.0                  | 170                               | 240 | 305 | 367 | 426 | 483 | 539 | 594 | 647 |
|                 | 2.5                  | 185                               | 260 | 330 | 396 | 458 | 519 | 578 | 635 | 692 |

Minimum considered pressure 0.4 bar

## MAX. LATERAL LENGTH (METER) AT DIFFERENT INLET PRESSURE AND DIFFERENT SLOPES

DRIPNET PC™ AS 20010/20012 • ID 17.5 MM • KD 0.25 • FLOW RATE 2.0 L/H

|                 |                      | DISTANCE BETWEEN DRIPPERS (METER) |     |     |     |     |     |     |     |     |
|-----------------|----------------------|-----------------------------------|-----|-----|-----|-----|-----|-----|-----|-----|
| UPHILL<br>2%    | INLET PRESSURE (BAR) | 0.2                               | 0.3 | 0.4 | 0.5 | 0.6 | 0.7 | 0.8 | 0.9 | 1.0 |
|                 | 1.0                  | 87                                | 113 | 135 | 153 | 167 | 180 | 191 | 201 | 209 |
|                 | 1.5                  | 111                               | 149 | 180 | 206 | 229 | 250 | 268 | 284 | 300 |
|                 | 2.0                  | 129                               | 174 | 211 | 244 | 274 | 300 | 323 | 345 | 365 |
|                 | 2.5                  | 143                               | 194 | 237 | 275 | 308 | 340 | 367 | 393 | 418 |
|                 | 3.0                  | 155                               | 211 | 258 | 301 | 338 | 373 | 405 | 434 | 462 |
| FLAT<br>TERRAIN | 1.0                  | 98                                | 134 | 166 | 196 | 224 | 250 | 274 | 297 | 320 |
|                 | 1.5                  | 120                               | 166 | 206 | 243 | 277 | 309 | 340 | 369 | 397 |
|                 | 2.0                  | 137                               | 189 | 236 | 278 | 317 | 354 | 389 | 422 | 454 |
|                 | 2.5                  | 151                               | 208 | 259 | 306 | 349 | 390 | 428 | 465 | 500 |
|                 | 3.0                  | 163                               | 224 | 280 | 330 | 377 | 421 | 462 | 502 | 540 |
| DOWNHILL<br>2%  | 1.0                  | 109                               | 155 | 199 | 242 | 283 | 324 | 364 | 403 | 442 |
|                 | 1.5                  | 130                               | 184 | 234 | 282 | 328 | 372 | 416 | 458 | 500 |
|                 | 2.0                  | 145                               | 205 | 260 | 312 | 362 | 410 | 457 | 502 | 547 |
|                 | 2.5                  | 158                               | 223 | 282 | 338 | 391 | 442 | 491 | 539 | 586 |
|                 | 3.0                  | 170                               | 238 | 301 | 360 | 416 | 469 | 522 | 572 | 621 |

Minimum considered pressure 0.4 bar

## MAX. LATERAL LENGTH (METER) AT DIFFERENT INLET PRESSURE AND DIFFERENT SLOPES

DRIPNET PC™ AS 20010/20012 • ID 17.5 MM • KD 0.25 • FLOW RATE 3.0 L/H

|                 | DISTANCE BETWEEN DRIPPERS (METER) |     |     |     |     |     |     |     |     |     |
|-----------------|-----------------------------------|-----|-----|-----|-----|-----|-----|-----|-----|-----|
|                 | INLET PRESSURE (BAR)              | 0.2 | 0.3 | 0.4 | 0.5 | 0.6 | 0.7 | 0.8 | 0.9 | 1.0 |
| UPHILL<br>2%    | 1.0                               | 69  | 91  | 109 | 125 | 139 | 151 | 161 | 170 | 179 |
|                 | 1.5                               | 87  | 117 | 143 | 165 | 185 | 203 | 219 | 234 | 248 |
|                 | 2.0                               | 101 | 136 | 167 | 194 | 218 | 240 | 261 | 279 | 297 |
|                 | 2.5                               | 111 | 152 | 186 | 217 | 245 | 270 | 294 | 316 | 336 |
|                 | 3.0                               | 121 | 164 | 203 | 237 | 268 | 296 | 322 | 347 | 370 |
| FLAT<br>TERRAIN | 1.0                               | 75  | 103 | 128 | 151 | 172 | 193 | 211 | 230 | 247 |
|                 | 1.5                               | 93  | 128 | 159 | 188 | 214 | 239 | 262 | 284 | 306 |
|                 | 2.0                               | 105 | 146 | 181 | 214 | 244 | 273 | 300 | 326 | 350 |
|                 | 2.5                               | 116 | 160 | 200 | 236 | 269 | 300 | 330 | 359 | 386 |
|                 | 3.0                               | 125 | 173 | 215 | 254 | 290 | 324 | 356 | 387 | 417 |
| DOWNHILL<br>2%  | 1.0                               | 81  | 116 | 148 | 179 | 208 | 237 | 265 | 293 | 320 |
|                 | 1.5                               | 98  | 138 | 175 | 210 | 244 | 276 | 307 | 338 | 368 |
|                 | 2.0                               | 110 | 155 | 196 | 235 | 271 | 306 | 340 | 374 | 405 |
|                 | 2.5                               | 120 | 169 | 213 | 255 | 293 | 331 | 367 | 402 | 437 |
|                 | 3.0                               | 129 | 181 | 228 | 272 | 313 | 353 | 391 | 428 | 464 |

Minimum considered pressure 0.4 bar

## MAX. LATERAL LENGTH (METER) AT DIFFERENT INLET PRESSURE AND DIFFERENT SLOPES

DRIPNET PC™ AS 20010/20012 • ID 17.5 MM • KD 0.25 • FLOW RATE 3.8 L/H

|                 | DISTANCE BETWEEN DRIPPERS (METER) |     |     |     |     |     |     |     |     |     |
|-----------------|-----------------------------------|-----|-----|-----|-----|-----|-----|-----|-----|-----|
|                 | INLET PRESSURE (BAR)              | 0.2 | 0.3 | 0.4 | 0.5 | 0.6 | 0.7 | 0.8 | 0.9 | 1.0 |
| UPHILL<br>2%    | 1.0                               | 60  | 80  | 96  | 111 | 123 | 134 | 144 | 153 | 161 |
|                 | 1.5                               | 75  | 102 | 125 | 145 | 163 | 179 | 194 | 207 | 220 |
|                 | 2.0                               | 87  | 118 | 145 | 169 | 191 | 210 | 229 | 246 | 261 |
|                 | 2.5                               | 96  | 131 | 162 | 189 | 213 | 236 | 257 | 276 | 295 |
|                 | 3.0                               | 104 | 142 | 176 | 206 | 232 | 258 | 281 | 302 | 323 |
| FLAT<br>TERRAIN | 1.0                               | 64  | 89  | 110 | 130 | 148 | 165 | 182 | 197 | 212 |
|                 | 1.5                               | 79  | 110 | 136 | 161 | 184 | 205 | 226 | 245 | 263 |
|                 | 2.0                               | 90  | 125 | 156 | 184 | 210 | 235 | 258 | 280 | 301 |
|                 | 2.5                               | 99  | 137 | 171 | 203 | 231 | 258 | 284 | 309 | 332 |
|                 | 3.0                               | 107 | 148 | 185 | 218 | 249 | 279 | 306 | 333 | 358 |
| DOWNHILL<br>2%  | 1.0                               | 69  | 98  | 124 | 150 | 174 | 198 | 221 | 244 | 266 |
|                 | 1.5                               | 83  | 117 | 148 | 178 | 206 | 232 | 258 | 284 | 309 |
|                 | 2.0                               | 94  | 132 | 166 | 199 | 229 | 259 | 287 | 315 | 342 |
|                 | 2.5                               | 103 | 144 | 181 | 216 | 249 | 281 | 311 | 341 | 369 |
|                 | 3.0                               | 110 | 154 | 194 | 231 | 266 | 300 | 332 | 363 | 393 |

Minimum considered pressure 0.4 bar



## MAX. LATERAL LENGTH (METER) AT DIFFERENT INLET PRESSURE AND DIFFERENT SLOPES

DRIPNET PC™ AS 23009 • ID 20.8 MM • KD 0.2 • FLOW RATE 0.6 L/H

|                 |                      | DISTANCE BETWEEN DRIPPERS (METER) |     |     |      |      |      |      |      |      |
|-----------------|----------------------|-----------------------------------|-----|-----|------|------|------|------|------|------|
| UPHILL<br>2%    | INLET PRESSURE (BAR) | 0.2                               | 0.3 | 0.4 | 0.5  | 0.6  | 0.7  | 0.8  | 0.9  | 1.0  |
|                 | 1.0                  | 198                               | 233 | 253 | 266  | 274  | 280  | 284  | 287  | 289  |
|                 | 1.5                  | 278                               | 345 | 390 | 423  | 447  | 465  | 478  | 490  | 498  |
|                 | 2.0                  | 336                               | 426 | 493 | 544  | 583  | 614  | 639  | 660  | 677  |
|                 | 2.5                  | 381                               | 491 | 575 | 641  | 695  | 739  | 775  | 806  | 832  |
| FLAT<br>TERRAIN | 1.0                  | 288                               | 394 | 488 | 574  | 653  | 728  | 799  | 867  | 931  |
|                 | 1.5                  | 356                               | 488 | 605 | 712  | 811  | 904  | 993  | 1076 | 1157 |
|                 | 2.0                  | 406                               | 557 | 691 | 814  | 927  | 1034 | 1134 | 1231 | 1323 |
|                 | 2.5                  | 446                               | 613 | 761 | 896  | 1021 | 1139 | 1250 | 1357 | 1459 |
| DOWNHILL<br>2%  | 1.0                  | 384                               | 575 | 753 | 916  | 1074 | 1228 | 1378 | 1527 | 1673 |
|                 | 1.5                  | 437                               | 641 | 832 | 1007 | 1176 | 1341 | 1502 | 1660 | 1815 |
|                 | 2.0                  | 478                               | 694 | 895 | 1082 | 1261 | 1434 | 1603 | 1769 | 1931 |
|                 | 2.5                  | 513                               | 739 | 950 | 1146 | 1333 | 1514 | 1690 | 1863 | 2032 |

Minimum considered pressure 0.4 bar

Due to lateral filling time and flushing effectiveness it is not recommended to exceed 800 meters lateral length

## MAX. LATERAL LENGTH (METER) AT DIFFERENT INLET PRESSURE AND DIFFERENT SLOPES

DRIPNET PC™ AS 23009 • ID 20.8 MM • KD 0.2 • FLOW RATE 1.0 L/H

|                 |                      | DISTANCE BETWEEN DRIPPERS (METER) |     |     |     |     |      |      |      |      |
|-----------------|----------------------|-----------------------------------|-----|-----|-----|-----|------|------|------|------|
| UPHILL<br>2%    | INLET PRESSURE (BAR) | 0.2                               | 0.3 | 0.4 | 0.5 | 0.6 | 0.7  | 0.8  | 0.9  | 1.0  |
|                 | 1.0                  | 159                               | 196 | 220 | 238 | 250 | 259  | 266  | 271  | 276  |
|                 | 1.5                  | 215                               | 275 | 320 | 355 | 383 | 405  | 423  | 438  | 451  |
|                 | 2.0                  | 255                               | 332 | 392 | 441 | 481 | 515  | 544  | 569  | 591  |
|                 | 2.5                  | 286                               | 377 | 449 | 510 | 560 | 605  | 642  | 676  | 706  |
| FLAT<br>TERRAIN | 1.0                  | 207                               | 283 | 351 | 414 | 471 | 525  | 576  | 625  | 671  |
|                 | 1.5                  | 255                               | 351 | 435 | 513 | 584 | 652  | 715  | 776  | 834  |
|                 | 2.0                  | 291                               | 400 | 497 | 586 | 668 | 745  | 818  | 887  | 954  |
|                 | 2.5                  | 320                               | 440 | 547 | 645 | 736 | 820  | 901  | 977  | 1051 |
| DOWNHILL<br>2%  | 1.0                  | 256                               | 377 | 496 | 614 | 724 | 825  | 923  | 1019 | 1114 |
|                 | 1.5                  | 297                               | 430 | 558 | 683 | 800 | 909  | 1014 | 1118 | 1220 |
|                 | 2.0                  | 328                               | 471 | 607 | 739 | 862 | 978  | 1090 | 1200 | 1306 |
|                 | 2.5                  | 354                               | 506 | 648 | 786 | 916 | 1037 | 1155 | 1270 | 1382 |

Minimum considered pressure 0.4 bar

Due to lateral filling time and flushing effectiveness it is not recommended to exceed 800 meters lateral length

## MAX. LATERAL LENGTH (METER) AT DIFFERENT INLET PRESSURE AND DIFFERENT SLOPES

DRIPNET PC™ AS 23009 • ID 20.8 MM • KD 0.2 • FLOW RATE 1.6 L/H

|                 |                      | DISTANCE BETWEEN DRIPPERS (METER) |     |     |     |     |     |     |     |     |
|-----------------|----------------------|-----------------------------------|-----|-----|-----|-----|-----|-----|-----|-----|
| UPHILL<br>2%    | INLET PRESSURE (BAR) | 0.2                               | 0.3 | 0.4 | 0.5 | 0.6 | 0.7 | 0.8 | 0.9 | 1.0 |
|                 | 1.0                  | 126                               | 160 | 185 | 204 | 219 | 230 | 240 | 248 | 254 |
|                 | 1.5                  | 166                               | 217 | 257 | 291 | 318 | 341 | 362 | 379 | 394 |
|                 | 2.0                  | 195                               | 257 | 309 | 352 | 389 | 421 | 450 | 475 | 498 |
|                 | 2.5                  | 217                               | 290 | 350 | 402 | 446 | 486 | 522 | 554 | 583 |
| FLAT<br>TERRAIN | 1.0                  | 152                               | 209 | 260 | 306 | 348 | 388 | 426 | 463 | 497 |
|                 | 1.5                  | 188                               | 259 | 322 | 379 | 432 | 482 | 529 | 574 | 617 |
|                 | 2.0                  | 214                               | 295 | 367 | 433 | 493 | 551 | 605 | 656 | 706 |
|                 | 2.5                  | 236                               | 325 | 404 | 477 | 544 | 607 | 666 | 724 | 778 |
| DOWNHILL<br>2%  | 1.0                  | 179                               | 260 | 339 | 416 | 491 | 566 | 641 | 710 | 774 |
|                 | 1.5                  | 211                               | 302 | 388 | 472 | 553 | 633 | 711 | 786 | 855 |
|                 | 2.0                  | 234                               | 334 | 427 | 516 | 602 | 687 | 769 | 847 | 921 |
|                 | 2.5                  | 254                               | 360 | 459 | 554 | 644 | 732 | 818 | 900 | 978 |

Minimum considered pressure 0.4 bar

Due to lateral filling time and flushing effectiveness it is not recommended to exceed 800 meters lateral length

## MAX. LATERAL LENGTH (METER) AT DIFFERENT INLET PRESSURE AND DIFFERENT SLOPES

DRIPNET PC™ AS 23009 • ID 20.8 MM • KD 0.2 • FLOW RATE 2.0 L/H

|                 |                      | DISTANCE BETWEEN DRIPPERS (METER) |     |     |     |     |     |     |     |     |
|-----------------|----------------------|-----------------------------------|-----|-----|-----|-----|-----|-----|-----|-----|
| UPHILL<br>2%    | INLET PRESSURE (BAR) | 0.2                               | 0.3 | 0.4 | 0.5 | 0.6 | 0.7 | 0.8 | 0.9 | 1.0 |
|                 | 1.0                  | 112                               | 144 | 168 | 187 | 202 | 215 | 226 | 234 | 241 |
|                 | 1.5                  | 146                               | 193 | 230 | 261 | 287 | 311 | 330 | 348 | 364 |
|                 | 2.0                  | 171                               | 227 | 274 | 314 | 349 | 379 | 407 | 431 | 454 |
|                 | 2.5                  | 190                               | 255 | 309 | 356 | 398 | 435 | 468 | 499 | 526 |
|                 | 3.0                  | 207                               | 278 | 339 | 392 | 439 | 481 | 519 | 554 | 587 |
| FLAT<br>TERRAIN | 1.0                  | 132                               | 181 | 225 | 265 | 302 | 336 | 370 | 401 | 431 |
|                 | 1.5                  | 163                               | 224 | 278 | 328 | 374 | 417 | 458 | 498 | 535 |
|                 | 2.0                  | 185                               | 255 | 318 | 375 | 427 | 477 | 524 | 569 | 612 |
|                 | 2.5                  | 204                               | 281 | 350 | 413 | 471 | 526 | 578 | 627 | 674 |
|                 | 3.0                  | 220                               | 303 | 377 | 445 | 508 | 567 | 623 | 677 | 728 |
| DOWNHILL<br>2%  | 1.0                  | 152                               | 219 | 284 | 348 | 410 | 470 | 531 | 591 | 651 |
|                 | 1.5                  | 180                               | 256 | 328 | 398 | 465 | 531 | 596 | 660 | 722 |
|                 | 2.0                  | 200                               | 284 | 362 | 437 | 509 | 579 | 647 | 715 | 780 |
|                 | 2.5                  | 218                               | 308 | 391 | 471 | 547 | 620 | 692 | 761 | 831 |
|                 | 3.0                  | 232                               | 328 | 416 | 500 | 579 | 656 | 730 | 804 | 875 |

Minimum considered pressure 0.4 bar

Due to lateral filling time and flushing effectiveness it is not recommended to exceed 800 meters lateral length

## MAX. LATERAL LENGTH (METER) AT DIFFERENT INLET PRESSURE AND DIFFERENT SLOPES

DRIPNET PC™ AS 23009 • ID 20.8 MM • KD 0.2 • FLOW RATE 3.0 L/H

|                 |                      | DISTANCE BETWEEN DRIPPERS (METER) |     |     |     |     |     |     |     |     |
|-----------------|----------------------|-----------------------------------|-----|-----|-----|-----|-----|-----|-----|-----|
|                 | INLET PRESSURE (BAR) | 0.2                               | 0.3 | 0.4 | 0.5 | 0.6 | 0.7 | 0.8 | 0.9 | 1.0 |
|                 | UPHILL<br>2%         | 1.0                               | 89  | 117 | 139 | 157 | 172 | 185 | 196 | 205 |
| 1.5             |                      | 115                               | 154 | 185 | 213 | 236 | 257 | 276 | 293 | 308 |
| 2.0             |                      | 134                               | 180 | 218 | 253 | 282 | 309 | 334 | 356 | 376 |
| 2.5             |                      | 148                               | 201 | 245 | 284 | 319 | 351 | 379 | 406 | 431 |
| 3.0             |                      | 161                               | 218 | 268 | 311 | 350 | 386 | 418 | 448 | 477 |
| FLAT<br>TERRAIN | 1.0                  | 101                               | 139 | 173 | 204 | 232 | 259 | 285 | 309 | 332 |
|                 | 1.5                  | 125                               | 172 | 214 | 253 | 288 | 322 | 354 | 383 | 413 |
|                 | 2.0                  | 142                               | 197 | 244 | 289 | 329 | 368 | 404 | 438 | 472 |
|                 | 2.5                  | 157                               | 216 | 269 | 318 | 363 | 405 | 445 | 483 | 520 |
|                 | 3.0                  | 169                               | 233 | 290 | 343 | 391 | 437 | 480 | 522 | 561 |
| DOWNHILL<br>2%  | 1.0                  | 113                               | 162 | 208 | 253 | 297 | 340 | 382 | 423 | 464 |
|                 | 1.5                  | 135                               | 191 | 244 | 294 | 343 | 389 | 435 | 480 | 524 |
|                 | 2.0                  | 151                               | 213 | 271 | 326 | 378 | 428 | 478 | 526 | 572 |
|                 | 2.5                  | 165                               | 232 | 294 | 352 | 407 | 461 | 513 | 563 | 613 |
|                 | 3.0                  | 176                               | 248 | 313 | 375 | 433 | 489 | 544 | 597 | 649 |

Minimum considered pressure 0.4 bar

## MAX. LATERAL LENGTH (METER) AT DIFFERENT INLET PRESSURE AND DIFFERENT SLOPES

DRIPNET PC™ AS 23009 • ID 20.8 MM • KD 0.2 • FLOW RATE 3.8 L/H

|                 |                      | DISTANCE BETWEEN DRIPPERS (METER) |     |     |     |     |     |     |     |     |
|-----------------|----------------------|-----------------------------------|-----|-----|-----|-----|-----|-----|-----|-----|
|                 | INLET PRESSURE (BAR) | 0.2                               | 0.3 | 0.4 | 0.5 | 0.6 | 0.7 | 0.8 | 0.9 | 1.0 |
|                 | UPHILL<br>2%         | 1.0                               | 78  | 103 | 123 | 140 | 155 | 167 | 178 | 187 |
| 1.5             |                      | 100                               | 134 | 162 | 188 | 209 | 228 | 246 | 262 | 277 |
| 2.0             |                      | 116                               | 156 | 191 | 221 | 248 | 272 | 295 | 315 | 334 |
| 2.5             |                      | 128                               | 174 | 213 | 248 | 279 | 308 | 334 | 358 | 381 |
| 3.0             |                      | 139                               | 189 | 232 | 271 | 305 | 337 | 367 | 394 | 420 |
| FLAT<br>TERRAIN | 1.0                  | 87                                | 119 | 148 | 175 | 200 | 223 | 245 | 266 | 286 |
|                 | 1.5                  | 107                               | 148 | 184 | 217 | 248 | 277 | 304 | 329 | 355 |
|                 | 2.0                  | 122                               | 169 | 210 | 248 | 283 | 316 | 347 | 377 | 406 |
|                 | 2.5                  | 134                               | 185 | 231 | 273 | 311 | 348 | 382 | 416 | 447 |
|                 | 3.0                  | 145                               | 200 | 249 | 294 | 336 | 375 | 413 | 448 | 482 |
| DOWNHILL<br>2%  | 1.0                  | 96                                | 136 | 175 | 212 | 247 | 282 | 316 | 350 | 383 |
|                 | 1.5                  | 114                               | 162 | 206 | 248 | 287 | 326 | 364 | 401 | 437 |
|                 | 2.0                  | 129                               | 181 | 230 | 275 | 319 | 361 | 402 | 441 | 480 |
|                 | 2.5                  | 140                               | 197 | 249 | 298 | 344 | 389 | 433 | 474 | 515 |
|                 | 3.0                  | 150                               | 211 | 266 | 318 | 367 | 414 | 460 | 504 | 547 |

Minimum considered pressure 0.4 bar